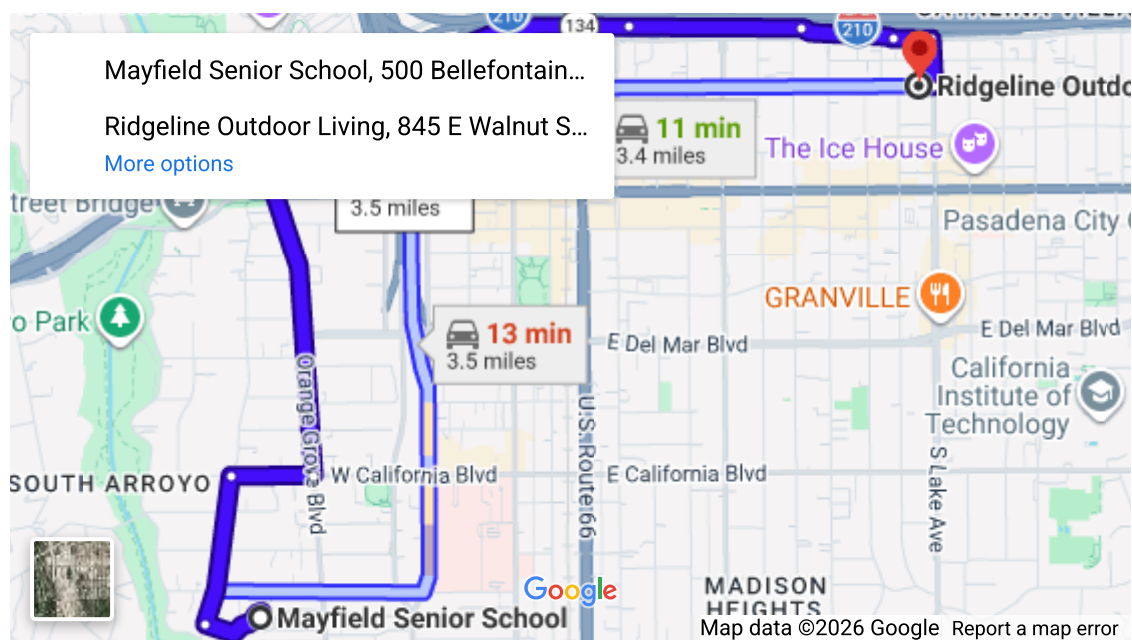


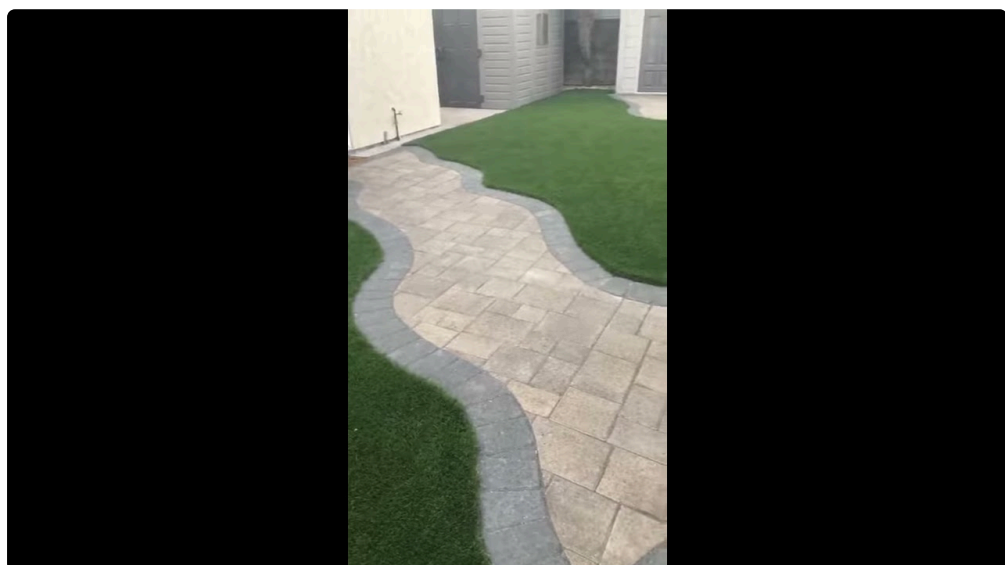
Pasadena lives outside. The light is bright, the evenings are soft, and the architecture asks for outdoor rooms that feel intentional. A well designed pergola can turn a patch of sunbaked lawn or a forgotten side yard into the most used “room” at home. Over the past dozen years building outdoor spaces from the Arroyo to Hastings Ranch, I have learned that a pergola here is less about decoration and more about shade management, microclimate, and honest materials that respect Craftsman and Spanish Colonial bones. Done right, it boosts comfort, resale, and water efficiency. Done poorly, it warps, bakes, and becomes a maintenance headache by year two.

This guide walks through real world decisions that matter in Pasadena’s Mediterranean climate, from siting and structure to vines, lighting, and long term care. Along the way, I will note how a pergola can support drought tolerant landscaping, fit with hillside constraints, and tie into an outdoor kitchen or fire feature without running afoul of local codes.



Start with the Pasadena sun, not the catalog photo

The best pergolas begin with shade math. Pasadena’s sun angle changes dramatically from June to December. In summer, overhead sun demands more horizontal shade. In winter, lower sun can sneak in under the canopy and warm a patio, which is a perk if you plan for it.



I like to map the solar path across three dates that anchor behavior: around June 21 for peak heat, late September for lingering warmth during football season gatherings, and mid December when the sun is low and outdoor lunches are still comfortable. A quick on site sketch, plus a sun path app if you use one, tells you how wide to set rafters, how tight to space purlins, and whether an operable louver roof makes sense. If your main use is late afternoon dinners, focus on a west screen or angled slats. If it is morning coffee and laptop work, think about eastern glare.

Santa Ana winds shape choices too. A thin shade cloth panel behaves differently in an October gust than a rigid polycarbonate panel. If your yard funnels wind off the foothills, plan for stronger post connections and avoid large continuous fabrics that turn into sails.

A five minute site assessment

Before falling in love with a material palette, walk the yard and answer a few practical questions. These answers will narrow design paths and save money.

- Sun and wind: When and where is it hottest, and where do winds enter and exit the space?
- Ground and grade: Is the surface level, on a slope, or on fill near a retaining wall?
- House interface: Where are doors, eaves, windows, and existing overhangs, and what style are they?
- Utilities: Where do gas, electrical, irrigation, and drains run, and what clearances are needed?
- Views and neighbors: What do you want to frame, and what would you rather screen out?

That simple checklist tells you if a freestanding structure in the lawn works better than an attached unit off the dining room, or if a side yard needs a slender canopy that threads between window headers and a property line setback.

Choosing structure type for Pasadena lots

Attached pergolas anchor to the house and feel like a natural extension of living space. On a single story craftsman, a ledger under the existing eave creates a low, cozy canopy perfect for morning shade. Watch that the roof pitch and rafter tails do not fight the pergola's lines. On a two story home, an attached pergola can get tall and spindly if not carefully proportioned. Sometimes going freestanding a few feet off the façade yields better scale and allows for air movement.

Freestanding pergolas succeed when they define a destination. Over a paver patio, they create a second room that pairs beautifully with a small outdoor kitchen. In Pasadena's deeper lots, a pergola at mid yard can bridge house and pool without blocking views of the San Gabriels. Set posts onto concrete footings that extend at least 12 to 18 inches below the surface, more on fill or near the Arroyo's softer soils, and always coordinate with any nearby tree roots. The city takes oak protection seriously, and rightly so.

Rooftop or terrace pergolas appear occasionally on modern renovations in Madison Heights or South Lake. These do best in aluminum or steel to keep dead load within structural limits. Before going this route, consult an engineer, check waterproofing details, and plan for a shade approach that will not turn the roof into an oven. Operable louvers and light colored finishes help.

On slope, especially in La Cañada Flintridge and Altadena foothill properties, posts need careful placement and often a grade beam or small retaining wall integration. Hillside landscaping ideas for these neighborhoods often pair terracing with a pergola at one level, which gives a stable outdoor platform and reduces erosion. If you are considering retaining wall work alongside a pergola, coordinate footing placement so the two structures do not

undermine each other. The best retaining wall materials for Pasadena hillside homes, such as CMU with a stone veneer or engineered block, integrate well with steel or hardwood posts and create a cohesive look.

Materials that earn their keep in Southern California

Pasadena's climate punishes finishes with UV, but also rewards materials that patina honestly. Good choices vary by aesthetic, budget, and maintenance appetite.

- **Aluminum:** Powder coated extruded aluminum handles UV and requires minimal maintenance. It is light, so engineering loads are friendlier on rooftops. Modern systems often include operable louvers and integrated gutters. Heat conduction can make dark colors hot to the touch. Costs run moderate to high depending on features.
- **Steel:** Tube steel posts and beams deliver slender profiles that suit contemporary work and mid century lines. Galvanized then powder coated finishes hold up well. Steel is excellent for long spans over outdoor kitchens. It needs a shop and a proper primer system near the coast, but in Pasadena's dry air it does very well. Mid to high cost.
- **Cedar or redwood:** Western red cedar and California redwood look right at home on craftsman bungalows. They are workable, take stain, and feel human. Left natural, they gray. Stained, expect recoat cycles in the 2 to 4 year range depending on exposure. For water wise landscapes, wood's softer feel offsets hardscape nicely. Mid cost, with maintenance.
- **Ipe and other hardwoods:** Dense tropical hardwoods deliver longevity and a refined finish. They resist termites and UV better than softwoods, but they still need oiling to hold color. Because of weight and drill time, labor runs higher. On Spanish Colonial homes, ipe rafters with white stucco posts can look timeless. High cost.
- **Vinyl and composites:** Historically, vinyl pergolas yellowed and felt flimsy. Newer composites do better, but joints often look bulky. I rarely specify them for historically sensitive homes. Where absolute low maintenance and budget rule, they can work for a small side yard shade over a grill. Low to mid cost.

The best hardscape materials for Southern California homes often dictate pergola choices. If you are pairing with a limestone or porcelain paver patio, powder coated steel in a soft charcoal can complement. For a decomposed granite dining terrace, cedar feels more natural. How to choose pavers for a Pasadena patio is its own topic, but keep slip resistance and heat absorption in mind, especially around pools.

Shade, airflow, and the art of percentage

Most pergolas live or die by how much shade they give during the worst hour of the day. A quick rule of thumb: 60 to 80 percent shade on midsummer afternoons keeps a patio comfortable without feeling like a cave. You can hit that number a few ways.

Fixed slats with tight spacing are the classic move. On a north south oriented pergola, run rafters east west and purlins north south, and adjust spacing to block the high sun. If you like winter sun, leave a slightly wider gap at the southern edge so low angle light can penetrate.

Operable louvers solve the shoulder season problem. I have installed louver systems in Linda Vista where summer afternoons are brutal but October through March begs for sun. With a small motor and a rain sensor, you can close louvers during a shower and keep cushions dry. This approach costs more, but if the pergola doubles as a true outdoor room with a TV and kitchen, the flexibility pays off.

Shade cloth and fabric sails add soft texture and can be swapped seasonally. Choose UV stable fabrics and plan for tensioning so Santa Anas do not shred them. These work best over smaller spans, like a 10 by 12 dining area. For wider coverage, use multiple panels with gaps that allow wind to pass.

Rigid panels in polycarbonate or tempered glass are another route. Clear or lightly frosted polycarbonate creates bright shade and blocks UV, which helps when you are growing herbs on a prep counter. Glass looks upscale but requires pitch and gutters to shed water and keep debris from baking on. In tree rich neighborhoods near the Arroyo, expect leaf litter and a cleaning routine.

A final thought many overlook: shade sides. A simple privacy screen with slats angled to the west can drop perceived temperature by a surprising amount. That screen can carry a vine and form a green wall that boosts evapotranspiration, a natural cooler in our dry heat.

Style that belongs with Pasadena's architecture

Pasadena's streets read like a style manual, and a pergola should nod to its home's vocabulary.

Craftsman homes want honest joinery, stout proportions, and wood or wood look finishes. Exposed through tenons, flared rafter tails, and a warm stain feel right. Pair with a low stone or clinker brick base at posts to echo porch piers, and consider a pergola that aligns with existing porch beams so the indoor to outdoor flow makes sense.

Spanish Colonial homes benefit from white or cream stucco posts, dark wood or metal beams, and arc shadows. Lighter colored fabric panels can work if they echo the curvature of arches. Wrought iron accents on brackets or lighting tie everything together. On the plant palette, bougainvillea looks the part, though it is thorny. If you prefer natives, California native grape in the Roger's Red variety delivers color without feeling out of place.

Mid century and contemporary homes thrive with steel and clean lines. Thin profiles, deep overhangs, and rhythmic slats that cast crisp shadows complement large glass sliders. Keep hardware concealed, and let the geometry lead.

On Tudor or Colonial revivals in San Marino and along Huntington Drive, a restrained wood pergola painted to match trim can extend a formal terrace without stealing attention from the architecture.

Pairing a pergola with outdoor living zones

A pergola transforms a patio into a destination, but it also supports zones for cooking, dining, and fireside lounging.

Outdoor kitchen ideas for Pasadena backyards benefit from overhead structure. A pergola gives a place to mount task lighting, a small fan, and even a vent hood if you cook often under cover. The best outdoor kitchen materials for Pasadena climate lean toward stainless steel cabinetry, stone or porcelain counters, and non combustible surrounds. If the pergola is wood, keep open flame appliances set away and follow manufacturer clearances carefully.

Fire pit design ideas for Southern California homes often include a pergola nearby, not directly overhead. Fire and overhead shade can coexist if you plan for heat and ember clearance. In wildfire sensitive areas, like the edge of the foothills, consider ember resistant design and choose metal or ignition resistant materials in zones closest to the fire feature.

For lighting, I favor a mix of low voltage and selective line voltage. Low voltage landscape lighting ties neatly to pergola posts for path and step illumination, and it is safer and flexible. Line voltage can feed a ceiling fan or

louver motor. Low voltage vs line voltage landscape lighting for Pasadena properties is a practical distinction more than theoretical. If your pergola anchors a main entertaining space, run conduit during construction so you are not fishing wires later.

Audio is easier than ever. Run speaker wire to two or four discreet weather rated units mounted high, and tie them into a system that also drives path lighting and irrigation controls. Smart irrigation systems for Pasadena homes sometimes live in the same equipment cabinet as outdoor audio and lighting. A tidy control hub makes maintenance simpler.

Planting the structure, not just around it

Vines give a pergola soul, but choose them with an eye to water use and maintenance. Drought tolerant landscaping ideas for Pasadena homes extend to what climbs your shade structure. California native plants for Pasadena yards provide excellent options.

California native grape, *Vitis californica* 'Roger's Red,' is a standout. It throws burgundy fall color, loves heat, and handles dry conditions once established. Train it along wires between posts or up a privacy screen, and thin yearly so it does not overwhelm slats.

Cleveland sage, while not a climber, perfumes the air near seating. Plant it just outside the pergola footprint and let its purple blooms pull pollinators into the space. For actual climbers, look at California honeysuckle, which offers delicate blooms and modest water needs. If you love wisteria but worry about water and weight, plant it in a separate arbor and keep the pergola's structure lighter.

How to set up drip irrigation in a Pasadena garden applies neatly here. Run a dedicated drip zone to each post base where you plant a vine, with adjustable emitters so you can dial back water after establishment. In our climate, new plantings appreciate consistent moisture for the first full warm season. How often you should water a drought tolerant garden in Pasadena depends on soil, mulch, and exposure, but once established, weekly deep watering in summer is common, and often less with shade. Smart controllers and moisture sensors help avoid common irrigation mistakes that waste water in Pasadena yards, such as watering in the heat of the day or running short, frequent cycles that encourage shallow roots.

Mulch beds under a pergola help with drift from rain or rinsing and tie into a water wise landscape design for Southern California homes. If you plan to replace a strip of lawn with drought tolerant plants in Pasadena, a pergola can mark that transition and frame a seating nook that makes the new planting feel intentional rather than like a removed lawn.

Pasadena permits, setbacks, and wildfire sense

Pasadena's planning rules for small accessory structures are straightforward compared to additions, but do not skip this step. Attached pergolas may count differently than freestanding ones. Height, proximity to property lines, and whether you are adding electrical all affect permit paths. Most of the simple, open top pergolas qualify as patio covers or minor structures, but when you start adding solid roofs, drainage, or deep footings near property lines, you may cross into stricter review. If you are in a historic district or working on a San Marino heritage home, design review can shape details. It is worth a quick call to the city or working with a contractor who has submitted in Pasadena and South Pasadena repeatedly.

In areas near open space or the foothills, check wildfire related requirements. Ember resistant details matter, such as metal mesh under eaves, non combustible roofing for solid cover sections, and careful plant selection under and adjacent to structures. Wildfire smart landscaping for Pasadena homes pairs lean, clean, and green zones

close to the house with more diverse plantings farther out. A pergola right off the family room should avoid dense, resinous vines and messy, debris heavy plants that collect embers.

If you plan gas lines for heaters or a kitchen, or any line voltage electrical, pull the right permits. The inspector who green tags your gas line will also notice if the pergola's connections are safe.

Maintenance, cycles, and what to expect at year two, five, and ten

Every material ages. Knowing when and how helps avoid the frustration that often follows the first season's honeymoon period.

On wood, expect to do a light clean and recoat at year two if the pergola faces south or west. North faces stretch to year three or four. If you use a transparent stain, UV will fade pigment faster than a semi transparent. Plan for an afternoon with a pump sprayer and brush, or hire out for a gentle wash and recoat. Fasteners should be stainless or hot dip galvanized. Anything else rusts and streaks.

On aluminum and steel, wash spring pollen and fall dust with a hose and a soft brush. Powder coat holds up well, but avoid harsh cleaners. Check motorized louver gaskets and pivot pins once a year and clear out debris from the gutter systems that many louvered roofs include.

Fabrics need seasonal care. Take down shade sails before peak Santa Ana events if they are exposed. Store clean and dry. If you keep them up year round, expect a 3 to 5 year lifespan on good fabrics.

Plants require a winter prune for shape and a late spring touch up to keep air moving through the canopy. That airflow helps a lot with summer comfort.

Budgeting with purpose

Costs vary with structure type, size, and features, but order of magnitude numbers help. A simple 10 by 12 cedar pergola over a decomposed granite patio often lands in the mid four figures for materials and basic labor, stretching into low five figures with lighting and a gas line nearby. Powder coated aluminum systems with operable louvers at similar size, wired with lights and a fan, frequently range from the mid to high five figures installed. Steel with hardwood slats for a 12 by 20 entertaining space can run higher due to custom fabrication, footings, and finishes.

Where money changes experience most: operable shade, integrated lighting, and the surface underfoot. Paver patio vs concrete patio also shifts budget and feel. Pavers allow easy access to utilities later and better drainage around trees. Concrete is clean, fast, and often cooler in light colors, but it locks in utilities and can crack in our clay soils. For Pasadena, I like porcelain pavers over a pedestal system near the house and a stabilized DG terrace farther out. Both read well with pergolas, and the best landscape approach for Altadena foothill properties often mixes permeable and solid surfaces to manage runoff.

If you need to phase, build posts, beams, and the basic canopy first. Add side screens, lighting, and a kitchen on round two. Run conduit and sleeves during phase one to save money later.

Timelines that work with Southern California seasons

The best time to start a landscaping project in Southern California depends on your goal. For pergolas, fall through early spring is ideal for construction. The weather is gentle on crews, city departments are less backlogged than during spring rush, and you will be ready to enjoy the space by late spring. If you are planting

vines or reworking the surrounding landscape to be drought tolerant, cooler months help roots establish before heat returns.

If you must build in summer, create a shade plan for workers and pause work on days with extreme heat or wind. It may slow the schedule, but it is worth it for craftsmanship and safety.

Two snapshots from recent Pasadena yards

On a 1920s craftsman near Caltech, we extended the back porch with a cedar pergola that married to existing rafter tails. Posts landed on stone piers that matched the front porch. We spaced purlins tighter on the west end, looser on the east, and trained Roger's Red grape along a wire at eye level for privacy. Low voltage path lights tucked into the posts, and a small ceiling fan under the center beam kept air moving during August dinners. The homeowners water **retaining wall installation cost** once a week in summer now, down from three times when lawn dominated. They also earned a smart controller rebate through SoCalWaterSmart, which is not about pergolas directly but supports the water wise system the pergola made more livable.

In Linda Vista, a contemporary steel pergola with operable louvers anchored an outdoor kitchen and dining space. We oriented the louvers to block midday sun and open to catch winter warmth. Underfoot, we used porcelain pavers that stay cool and wipe clean. A west screen of slatted steel frames the view without glare. The space reads minimal, but it hums with details: conduit within posts, drip irrigation sleeves, and footings coordinated with a small retaining wall to tame a 12 inch grade change. Maintenance has been a hose down and a spring check of the louver motor.

Small lots, big comfort

Pasadena has plenty of compact yards, especially north of the 210 and in South Pasadena. A pergola does not need to be large to make an impact. I often design 8 by 10 or 10 by 12 canopies that sit flush to a fence or garage wall. To keep them light, use a single back beam with wall mounted brackets and two slim posts up front. Angled slats that block a neighbor's second story window deliver privacy without a solid wall. Pair with a narrow bench that doubles as storage, dimmable LED strips tucked into a beam, and a potted California lilac for seasonal color. Smart irrigation runs only to the pots and a vine at one post. The result feels like a real room while leaving open space for play or a small edible garden.

Pergolas on slopes and along the foothills

Hillside landscaping ideas for Pasadena and La Cañada Flintridge often include terracing. A pergola on a mid terrace becomes a stabilizer and an invitation. When you carve a 12 foot deep pad into a slope, coordinate with a geotech if needed and always tie drainage into a real outlet, not a neighbor's fence line. In these settings, steel posts make sense because they can be set onto smaller footings with higher moment capacity, which helps when soils are variable. Retaining wall design for Pasadena hillside properties also intersects with pergola posts where loads concentrate. I prefer to land posts behind a wall's backfill zone or integrate sleeves into the wall during construction, not after the fact.

To prevent erosion, set planting beds above and below the pergola with natives that root deeply. Mulch, drip lines, and a permeable patio surface reduce runoff. A small roof gutter on an operable louver pergola should feed a drain line or a rain garden, not just spill over a slope.

Lighting that respects architecture and night skies

Landscape lighting ideas for Pasadena homes need to balance function and subtlety. Under a pergola, I use three layers: soft overhead light for general use, targeted task light over a grill or table, and low, warm accents at posts or steps. How to light mature trees in a Pasadena yard connects directly to the pergola experience. If you uplight a beautiful coast live oak beyond the pergola, your outdoor room gains depth. Keep color temperature warm, around 2700K, and avoid glare that competes with starlight. Outdoor lighting that complements Craftsman and Spanish Colonial homes tends to hide sources and reveal surfaces.

Path lighting design for Pasadena front yards can teach restraint for the backyard too. Fewer fixtures, better placed, almost always look more elegant than a runway of lights.

Bringing it all together

The right pergola in Pasadena is climate armor, architectural partner, and garden trellis in one. It cools a patio during August heat, frames a table in November, and gives your drought tolerant landscape a reason to be visited every day. It can be as simple as cedar beams over a gravel terrace or as sophisticated as a louvered steel canopy with integrated lights over a porcelain paved kitchen. The common thread in spaces that last is attention to sun paths, wind, materials, and maintenance, plus a respect for the home's style.

If you are already planning a broader landscape renovation for your Pasadena home, consider designing the pergola and hardscape together. Ridgeline top hardscaping ideas for Pasadena climate almost always include generous shade, water wise planting, and smart irrigation. When those systems align, the yard becomes easier to live in and cheaper to run. And if you are starting small, a modest pergola over a paver or DG patio can be the first step of many toward a yard that works with this city's light and seasons.