

If you only have 35 to 70 minutes before boarding at Miami, you can still get genuine value out of the British Airways Lounge MIA. The space sits in Concourse E, a short walk from BA's usual departure gates, and it punches above its weight for a United States lounge when you plan your time with intention. [Soulful Travel Guy BA Lounge Miami International Airport](#) I have popped in during 40 minute turns, during weather delays, and on late-night departures. The difference between a frazzled dash to the gate and a composed boarding often comes down to a handful of smart choices as you move through the British Airways Lounge Miami.

This is a practical guide for travelers who want to squeeze the most from a short visit. It covers who gets in and when, where to head first once you clear the front desk, how to time a quick shower, and what to prioritize from BA lounge amenities Miami offers. I will also flag alternatives in the oneworld lounge Miami network at MIA for unusual situations, and I will share a few on-the-ground details that save minutes when every minute counts.

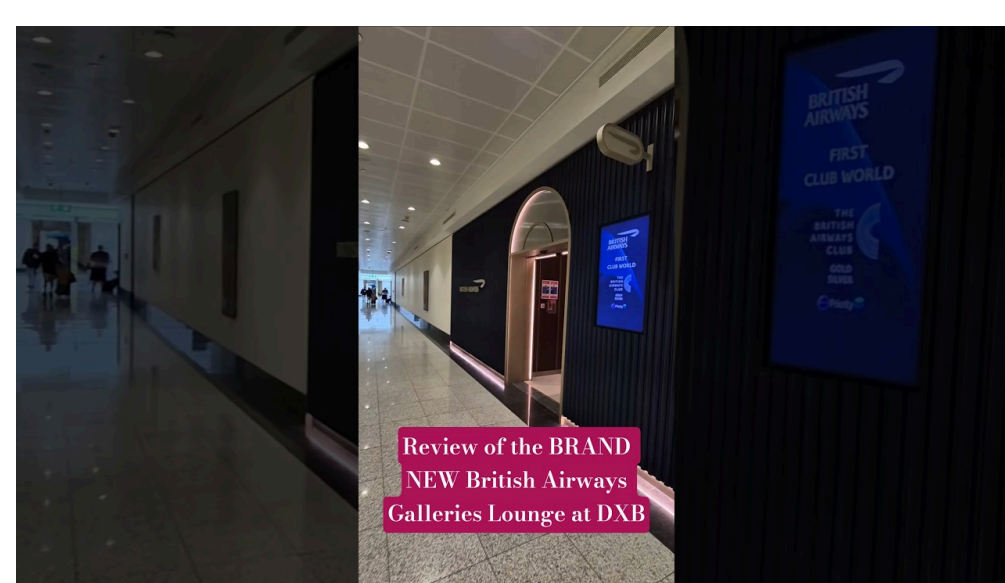
## Where the lounge sits and why that matters

The British Airways Lounge location MIA is in Concourse E, airside, near the E satellite gates that BA often uses for London flights. If you are already in Concourse E, the walk from the security area to the entrance usually takes 5 to 8 minutes at an average pace. If you are connecting from Concourse D, add an extra 10 to 15 minutes depending on whether you catch the Skytrain and how crowded the corridor feels. The signage for the British Airways Lounge Concourse E is adequate, but one trick helps: watch for the split where E gates funnel toward the satellite, then look for BA branding on the mezzanine level.

Miami International Airport British Airways Lounge placement is good for BA departures but imperfect for tight connections arriving in D with no airside transfer time to spare. If your inbound lands late in D and you have less than 25 minutes before BA's published boarding time, go directly to the gate. If you still have 30 minutes, you can make a surgical stop at the BA Lounge Miami International Airport, provided you move with purpose.

## Who gets in and at what times

The British Airways Lounge access Miami rules are the standard BA and oneworld mix. You can enter as a British Airways Business Class Lounge Miami or British Airways First Class Lounge Miami passenger. oneworld Emerald and Sapphire members flying a same-day oneworld flight can also gain access, subject to capacity. Day passes are not typical here, and Priority Pass does not apply.



The British Airways lounge opening hours Miami flex around BA departures, with extended evening hours when multiple long-haul flights cluster. Midday can be quieter, especially on days without BA mid-afternoon departures, though the lounge may still open to support codeshares and operational needs. If you have a flight after 9 pm, expect the lounge to be busy from 6:30 pm onward once check-in peaks. When a delayed departure pushes past midnight, staff often keep a core section running, but offerings can slim down and alcohol service may taper by local law. If you need specifics for a late departure, ask at the check-in counter or BA app chat while you are [British Airways Lounge Miami](#) en route to the airport.

## The 45 minute blueprint

For a short stay, the right sequence beats trying to sample everything. I follow a simple order to get the most out of the British Airways Miami Lounge without clock-watching every second.

- Check shower availability at the desk, then reserve or pass.
- Pick a seat near the buffet and beverage stations, not the windows.
- Grab a plate of hot items and one cold selection, then a drink.
- Download anything you need on Wi-Fi while you eat.
- Use the restroom early, settle the bill of your time, and leave with a water.

That pattern covers the British Airways lounge showers Miami, BA lounge food and drinks Miami, and seating choice. You can then adapt the timing to 25, 40, or 60 minutes as needed.

## **What the BA Global Lounge Concept looks like here**

British Airways has been refreshing several lounges under the BA Global Lounge Concept. Miami reflects that style more in layout and finishes than in a wholesale rebuild. Expect a mix of warm woods, blue accents, and zones for dining, quiet work, and social seating. Some sections feel more lived-in than a brand-new outstation, which has pros and cons. The softer lighting and varied seating make short stays comfortable, yet seat-side power outlets can be a touch inconsistent. If you need to charge quickly, scout for the cluster of modern armchairs with side tables and visible USB-A or USB-C ports rather than relying on the older wall banks.

Noise levels vary with departure waves. Before the main London flights, conversation carries, and the bar area hums. If you want a quieter pocket to make a call, step back from the buffet line and choose the side alcoves away from the windows. Those nooks usually offer enough separation to speak at a normal volume without intruding on neighbors.

## **Food and drink strategy when time is tight**

The BA lounge amenities Miami spread is better than the average domestic club but less extravagant than Heathrow. The hot buffet tends to offer two or three warm dishes aligned with the departure time. Evening service often includes a pasta or rice dish, a protein like chicken or beef, and a vegetarian option such as roasted vegetables or a curry. Cold selections usually include a salad base with toppings, cheeses, and a couple of desserts. You can assemble a full plate in one pass, which is the right way to approach the British Airways lounge food and drinks Miami lineup when you only have minutes to spare.

The self-serve bar carries a respectable range: at least one sparkling wine, a couple of reds and whites, standard spirits, and a short cocktail setup. Miami often features a rum that rewards a simple pour over ice. Beer leans toward recognizable labels plus a local option in rotation. If you prefer to board well hydrated and not foggy, take a sparkling water or a ginger ale with lime and save any heavier drinking for onboard if you have a long-haul Club World seat. Espresso machines pull consistent shots; the milk setup supports cappuccinos and lattes. If you need a caffeine jolt fast, an Americano from the machine is quicker than waiting on a barista interaction at peak times.

Desserts are portioned small. That helps if you are trying to keep moving. I tend to choose one sweet, then keep a cookie or a wrapped item in hand if I leave early. Staff prefer you to consume food inside the lounge, but a discreet sealed snack usually draws no attention if you keep it tidy and do not leave a trail.

## **Showers: when to take one, and when to skip**

The British Airways lounge showers Miami are the best way to reset before an overnight to London. The rooms are compact but clean, with reliable hot water and a consistent supply of towels. The queue fluctuates. Right after security peaks or 60 to 90 minutes before a large BA departure, expect a wait of 10 to 20 minutes. If you have only 30 minutes in the lounge, skip the shower unless staff can take you immediately. A two to three minute rinse is possible if you time it perfectly, but you will rush, and you risk boarding anxiety.

The sweet spot for a quick wash is a 45 to 60 minute window with a confirmed slot at check-in. Ask the desk staff for an estimate before you sit down. If they say a room is ready, take it right away, then eat. If they quote more than 10 minutes, eat first, then circle back. Do not hover in the corridor. The attendants give preference to passengers who checked in with the desk, not walk-ups waiting by the door.

## **Seating choices that work for quick stays**

Pretty views tempt, but windows often mean extra steps back to the buffet and restrooms. For a short visit, sit close to the action. A high-top table within sight of the hot dishes lets you refresh a plate in under a minute. If you need to download Netflix episodes or airline app updates on Wi-Fi, the signal is broadly strong, but the least congested nodes tend to live near the middle dining section, not the corners.

If you are traveling with a companion, choose a two-top against a half wall. It gives you a ledge for devices and a quick path in and out. Families who enter on oneworld status should aim for the deeper seating with more elbow room. The staff usually manage to keep a few sections less crowded than the bar area; if it looks packed, ask the attendant if a quieter zone has opened. They tend to know which pockets free up first after a boarding call.

## Wi-Fi, work, and boarding rhythm

Speeds vary, but 20 to 60 Mbps downloads are typical when the lounge is moderately busy. That is enough for quick backups or downloading a playlist. If you board from a satellite gate, your phone may swap networks en route, which can interrupt downloads. Start large pulls immediately after sitting down and verify the files before you move.

British Airways often begins boarding announcements a few minutes ahead of the app's push alerts in the British Airways Lounge MIA. Listen to the lounge announcements, but check your flight's gate on the airport screen before you leave. Gate changes at MIA are not rare, and a ten minute detour to the wrong pier can undo your careful timing. If you are on a British Airways First Class Lounge Miami or Club World ticket, keep an eye on preboarding timing. BA tends to call preboard about 45 minutes before departure for long-haul, but staff can adjust on the fly when aircraft swaps or crew timing shift. If you want overhead space in Club World, do not dawdle once your group is called.

## Comparing the BA Lounge to other oneworld options at MIA

Miami's oneworld lounge Miami map includes the excellent American Airlines Flagship Lounge in Concourse D. If your BA flight departs from E, the Flagship Lounge can be a worthwhile detour only if you have at least 70 to 90 minutes total before departure and a clean airside path. The Flagship's food variety usually beats BA's selection, and showers are more numerous. That said, when time runs short, proximity wins. The BA Lounge Concourse E Miami keeps your walk minimal and your boarding stress low.



If you arrive early in D with hours to spare, recharge in Flagship, then transfer to E about 45 to 60 minutes before departure. That timing accounts for the inter-concourse walk and buffer for unhurried boarding. If your inbound arrives late into E and you have oneworld status, the BA lounge is the right call, not a jog back to D.

## Dealing with peaks, delays, and edge cases

A few patterns repeat at the British Airways premium lounge Miami. The first is the pre-evening push. From roughly 6 to 8 pm, the lounge fills with transatlantic passengers, and the buffet cycles dishes quickly. The second is the delayed departure squeeze, when a weather system in the Northeast or thunderstorms over the Everglades stalls flights. Staff will work to restock, but food can become more basic late at night. If you anticipate a delay, eat earlier rather than banking on a late resupply.

A third pattern is the sudden shower surge 70 minutes before a long-haul. If showers matter to you, ask on arrival, not after you finish a meal. Fourth, power outlets near the bar are contested. Keep a compact battery pack handy so you are not dependent on a single outlet. Fifth, announcements can be difficult to hear in the back corners. If you rely on auditory cues, sit closer to the central area.

For irregular operations, BA sometimes hands out food vouchers if the lounge must close before a very late departure. If an agent at the desk mentions operational constraints, clarify whether you should expect to board from a bus gate. Rare at MIA, but if it happens, give yourself five extra minutes to reach the holding area.

## **A realistic 25, 40, and 60 minute plan**

Not every short visit is the same. Here is how I handle three common windows.

- 25 minutes: Skip the shower. Choose a seat near the buffet. Build one plate with a hot entree and a salad, pour water or a quick espresso, and do a rapid check of emails on Wi-Fi while eating. Use the restroom, refill water, and leave at T-14. You will arrive at the gate as your group begins to queue.
- 40 minutes: Ask for shower availability first. If no wait, take a five minute rinse, then eat a quick plate and a coffee. If there is a wait, eat first, then try for a shower if called within 10 minutes. Wrap up with a restroom stop and a final look at the departures board.
- 60 minutes: You can do it all without rush. Ask for a shower, take 7 to 10 minutes, then sit for a small meal and a drink. Download content on Wi-Fi while you eat. Take a lap to stretch, top up your water, and walk to the gate with 18 to 20 minutes to go.

## **Small details that save minutes**

Staff at the front desk will scan your boarding pass and, if needed, your status card. Have them ready in your hand. If you are traveling with a companion on the same booking, present both passes together to speed entry. If you need a shower, say so immediately so the attendant can put your name down.

The ice machine sits near the bar. Miami humidity can leave you parched after security, so ice water before any alcohol sets a better baseline. Napkins and cutlery sometimes live at the far end of the buffet. Grab them first so you do not backtrack with a full plate. If you want to work, plug in only once you have food and water, not before, so you do not set up twice.

If you tend to misplace items in lounges, keep your passport and boarding pass in a jacket chest pocket or a single zip compartment in your carry-on. British Airways staff in Miami are helpful, but recovering a passport ten minutes before boarding will send your stress through the roof. I have watched more than one traveler retrace laps over a missing document that turned up under a chair cushion.

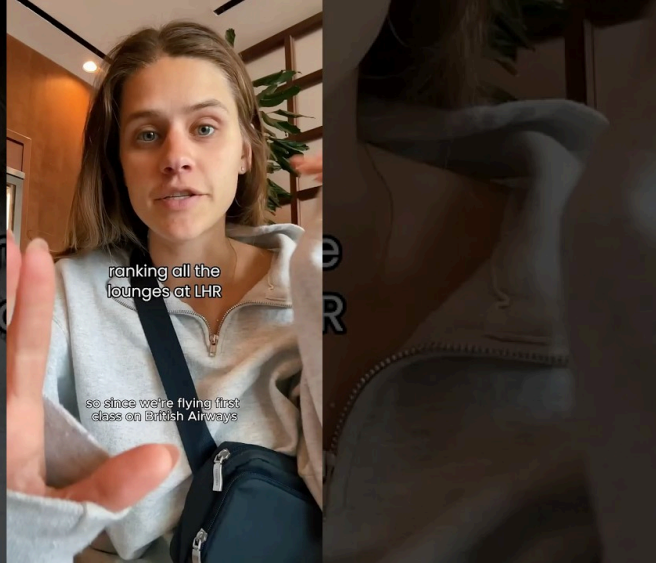
## **A few notes on service and atmosphere**

The lounge team runs a steady operation. Tables are cleared promptly, and attendants offer help without hovering. During busy banks, the bar can stack up several deep. If you dislike waiting, pour your own wine or beer and skip cocktails. If you do order, keep it simple, such as a gin and tonic or a rum with soda, which the bartender can build in seconds.

Temperature trails the crowd. When the room fills, it warms by a couple of degrees. If you run hot, avoid the deep interior sections during peak. The window line gets bright, especially at sunset, which is beautiful but not ideal for laptop work without dimming your screen. If you need to take a work call, let your seat neighbor know you will speak briefly. It is a small courtesy in a shared space.

## **The boarding walk and a last check**

Miami gates can sit farther than you expect. From the lounge door to a typical E satellite gate, I budget 6 to 8 minutes at an unhurried pace. If your flight boards from a hard stand or a bus gate, staff will announce it and point the way. Take your water, but finish any open beverage before you hit the door to avoid awkward conversations with security staff outside the lounge.



Do a quick pockets check just before leaving your table: phone, passport, wallet, boarding pass, glasses. Then peek at the lounge monitor one last time. If the gate changed from E to D or vice versa, you need to move with purpose. When that happens, do not try to rework your visit plan. Skip any last indulgence and go.

## When the BA lounge might not be your best move

If you are arriving in Concourse D with less than 25 minutes to boarding and you still need to reach E, the math rarely works. Head straight to the gate. If your BA flight departs late at night and the British Airways Lounge MIA has already closed, the best backup is an American Admirals Club with reciprocal access if your status or cabin allows. Food variety will be leaner, yet you will find a quiet chair and power. If you are traveling with a large family group under oneworld status that admits only one guest, you may be better off waiting together in the public seating rather than splitting up for a rushed lounge visit.

## Final thoughts for a smoother short stay

The BA Lounge Miami is not the largest at MIA, but it ticks the right boxes for a well-planned short stop. Location near the typical BA gates keeps your path simple. Food and drink are reliable, with enough hot options to count as a pre-flight meal. Showers are worth it when timing cooperates. The atmosphere shifts with the bank, yet you can usually find a pocket of calm if you look a little.

Treat the British Airways Lounge Miami as a tool rather than a destination, and you will board feeling sharper, better fed, and less rushed. With a few practiced moves - confirm shower timing on arrival, sit near the buffet, eat once and well, keep an eye on the monitors, and leave a few minutes earlier than you think you need - even a 30 minute visit can make your flight from Miami feel a level above. And that is the whole point of a good lounge, especially on a tight clock.