

A busted garage door spring has a method of transforming a normal morning right into a trouble you can not overlook. The door may feel impossibly heavy, refuse to lift, or relocate erratically and bang shut faster than it should. In an area like the Gold Coastline, where storm preparedness matters as much as day-to-day ease, a spring concern is more than an annoyance. It can affect security, gain access to, and the method the entire garage door system behaves under pressure.

The first thing worth saying simply is that garage door springtimes are not an informal repair. They save a huge quantity of stress, which tension is what makes the door manageable when it is functioning properly. When a springtime fails, the threat is not simply the busted part itself. It is the abrupt inequality that follows. A springtime fixing done carelessly can become a significant injury or damage to the door, the opener, the tracks, or the frame around the opening. That is why the best method is not to deal with the work as a routine DIY solution, even if you are comfortable with fundamental home maintenance.

Why the spring matters greater than a lot of homeowners realize

A garage door is a balanced system. The spring offsets the weight of the door so the motor does not have to do all the job. When that equilibrium is shed, the garage door motor strains, the opener may sound louder than typical, and the door can stop partway or end up being unreliable. In useful terms, a damaged or busted springtime can make the whole door behave terribly long prior to it quits moving altogether.

There is also a resilience concern that matters in Queensland. Official preparedness guidance identifies garage doors as a well-known powerlessness in cyclones. If the door is not appropriately rated for wind pressure, or if it does not have an ideal bracing system when serious weather strategies, it can fail under tons. As soon as a garage door gives way, the damages can spread right into surrounding walls, ceilings, and roofing cladding. That is not a small fixing. It can come to be a major architectural and weatherproofing problem.

That is why springtime problem, door ranking, and storm readiness all belong in the very same conversation. A springtime may appear like a tiny component, however on a garage door it plays a main role in both day-to-day feature and severe-weather resilience.

Signs you are managing a spring problem

A fell short or falling short spring normally leaves clues. The door might really feel heavier than common when lifted by hand. It may open just partway and then stop. You might listen to a sharp bang from the garage, which is often the sound people see when a torsion spring snaps. In various other instances the door will certainly go jagged, relocate erratically, or close much faster than it should.

The opener can likewise reveal the trouble. If the springtime has actually shed tension or busted entirely, the garage door electric motor might struggle to lift the door, click without moving it properly, or reverse suddenly. That is not constantly an electric motor mistake. In many homes, the opener obtains condemned initially when the actual problem is inadequate spring balance.

Some homeowners see additional troubles too, like voids near the bottom, used seals, or a frame that appears out of square after a tornado. Those details matter due to the fact that a springtime problem can expose other powerlessness in the door system, particularly if the door has been hit by wind, moisture, or debris.

What can be examined securely prior to anyone touches the spring

There serves job a homeowner can do without going near the spring equipment itself. The goal is to gather details, protect the system from further pressure, and determine whether emergency situation repair work are needed.

First, quit utilizing the door if it is plainly out of balance. Do not maintain running the opener just to see if it "catches." Repeated attempts can exhaust the electric motor and damage other components of the system. If the garage door is stuck open, safeguard the location as finest you can and avoid putting yourself under the door.

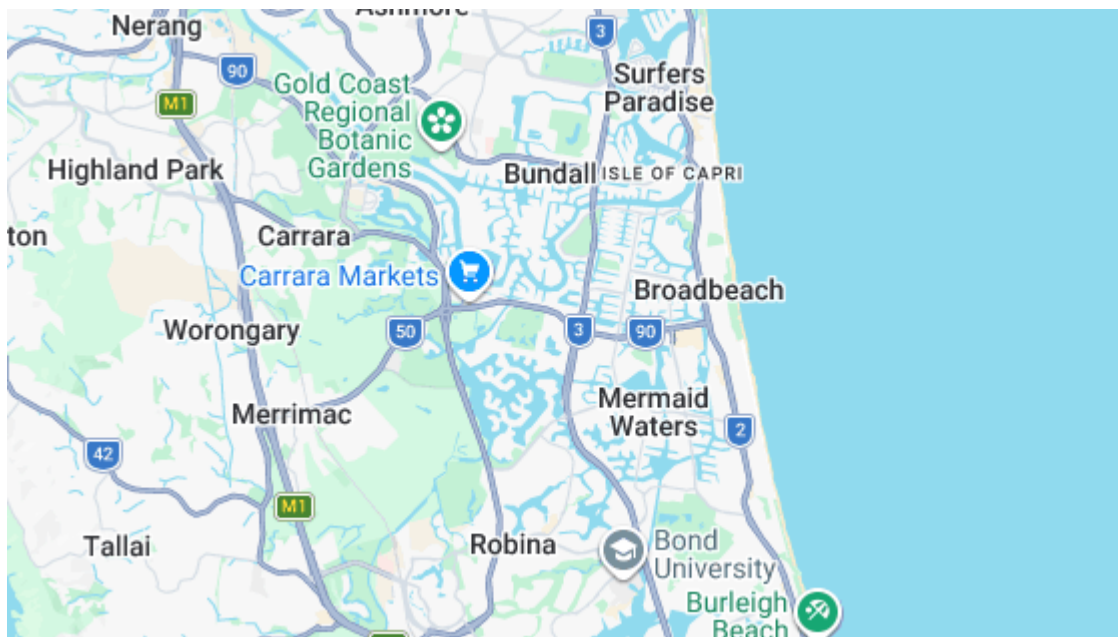
Second, look at the visible components of the system from a secure distance. Examine whether the door rests level on the tracks, whether seals are intact, and whether the opening looks damaged around the edges. If you notice bent panels, displaced track areas, or noticeable indicators of impact, those are ideas that the springtime problem may not be isolated.

Third, consider timing. If a tornado is approaching, the repair conversation adjustments. Queensland preparedness assistance continuously stresses safeguarding homes before severe weather and remaining tuned to warnings throughout cyclones and tornados. A garage door that is currently compromised should not be entrusted to chance when high winds are possible.

A short safety check before deciding what to do next

1. Stop running the door if it really feels abnormally heavy or moves unevenly.
2. Keep clear of the spring, wires, and brackets, especially if anything looks twisted or loose.
3. Check the door opening, seals, and bordering structure for storm-related damage.
4. If extreme weather condition is approaching, deal with the garage door as part of your home's storm plan.
5. Call for expert aid if the door is stuck, off-balance, or revealing more than one symptom.

This is where care pays off. A great deal of people intend to fix the whole point in one go, however the most intelligent relocation is to stop the scenario from worsening while you set up the appropriate repair.



Why springtime repair service is different from normal garage maintenance

Plenty of garage door upkeep is uncomplicated. Keeping tracks clean, examining seals, examining the opener, and lubricating moving components can usually be done as part of precautionary maintenance for garage doors.

Spring job is various due to the fact that the springtime is the stress resource. That indicates the threats are not similar to replacing a remote battery or cleaning debris from the threshold.

The largest error I see is when someone presumes the springtime is just an additional changeable get rid of a few bolts holding it in place. Actually, springtime systems can be firmly loaded and ruthless. One wrong motion can launch force unexpectedly. That is why people searching for exactly how to repair a garage door often need a safety-first solution rather than a basic equipment checklist.

This is particularly real with doors that are part of tornado resilience planning. Queensland advice motivates garage doors to adhere to AS/NZS 4505 and to be appropriately ranked for wind stress, or to have a bracing system for approaching cyclones. If the door itself is not certified or has actually been modified over time, spring repair may be just part of the solution. The safer, much more sturdy option might be repair service incorporated with replacement planning.

When emergency repair services make sense

Emergency repair services are not simply for significant failures. They make sense whenever a damaged springtime leaves the property revealed, the door can not be secured correctly, or the garage door motor is clearly under stress. If the spring falls short throughout business hours, a house owner may still have the ability to keep the garage shut and prepare an arranged browse through. If it happens prior to a cyclone, throughout a serious tornado warning, or after the door has jammed midway open, the necessity increases.

On the Gold Shore and throughout Queensland, tornado prep work is not theoretical. Homeowners are advised to secure doors, home windows, and outside products prior to serious weather condition. A garage door that will not shut, or one that shuts however no more feels stable, must be treated as part of that prep work. If the door is the main barrier between the home and the outside, and the spring has left it unreliable, emergency situation repair work can be the distinction between a workable circumstance and a much bigger one after the climate turns.

An excellent emergency reaction is typically concerning stabilization initially. That implies safeguarding the opening preferably, lowering pressure on the opener, and organizing the most safe readily available repair work course. If a fixing can not be finished right away, it is still worth having the door analyzed so the following action is clear, particularly if tornados are in the forecast.

What a proper repair work need to address

A risk-free and reliable springtime repair work is never nearly the spring itself. A proficient professional will consider the whole system. That consists of the cables, tracks, hinges, door equilibrium, opener behavior, and whether the door has signs of wear that indicate broader failing. If the spring damaged since the door was out of balance, the origin needs to be addressed or the issue may return.

There is also the issue of compatibility. Springs has to match the door they are supporting. A door that has actually been customized, replaced in areas, or fitted with an opener that was included later may behave in a different way from a basic configuration. In those situations, "repair service" may indicate change, replacement, or suggestion to update parts of the door system so it works as intended.

For homes in storm-prone locations, the conversation can reach door type as well. Roller doors, sectional doors, and tilt doors each have different actions under wind tons and different maintenance requirements. A spring fixing on one kind may be uncomplicated, while another may expose that the door itself is not an excellent

suitable for the home's strength goals. That is where experience issues. In some cases the least expensive fix is not the very best response if the door stays vulnerable in severe weather.

How specialists approach the task safely

The most safe fixings are done with the system isolated, the door sustained properly, and the stress regulated by a person who recognizes the hardware well. The service technician will generally confirm whether the spring has stopped working, whether the door is safe to relocate, and whether there is damage to the opener or track alignment. If the garage door electric motor has been straining, that should be reviewed also, since an overworked opener can come to be loud, slow, or unreliable even after the spring is fixed.

There is a useful difference in between a fixing that brings back activity and a repair service that recovers trust. Any individual can make a door relocation once again. The far better result is a door that opens up equally, shuts easily, seals correctly, and does not leave you questioning whether it will act the next time the weather condition changes.

Homeowners often take too lightly just how much the door's balance affects day-to-day use. A correctly repaired springtime ought to let the door really feel controlled, not jumpy. It must decrease the load on the opener, not require the opener to compensate. If the repair service was succeeded, the door ought to likewise rest much better versus the frame, which assists with both security and storm resilience.

Preventive maintenance for garage doors that aids avoid springtime trouble

The best spring repair work is the one you do not require yet. Precautionary maintenance for garage doors does not remove wear, but it does lower the probabilities of being captured unsuspecting. A simple routine of evaluating seals, inspecting the door's movement, listening for uncommon noises, and maintaining the system tidy can disclose problems early.

A springtime often offers caution prior to it falls short entirely. The door might begin to feel inconsistent. The opener may sound like it is functioning harder. The balance may appear somewhat off. Those are the moments when a home owner must take note as opposed to waiting for a complete breakdown. If you catch the problem early, you may prevent a locked-up door on a weekend or throughout a tornado warning.

Maintenance also matters because Queensland guidance on tornado preparedness is really clear about the home envelope. Door frames, seals, and outside openings must be checked prior to storm season. That advice fits normally with garage door care. A springtime in good condition, a door that shuts securely, and seals that do their work all work together to maintain the garage from coming to be a weak point.

Security, resilience, and the actual worth of a sound springtime system

A garage door is not only a gain access to factor. In lots of homes, it is a huge part of the structure envelope and a vital safety and security barrier. Queensland security design support referrals roller doors, anti-tamper features, and padlockable securing systems for safe and secure applications. That might seem like a different topic, but it is connected. A door that can not shut effectively as a result of a spring mistake is a door that can refrain from doing its safety task well.

The very same holds true after storms. Even when the weather condition passes, a garage door may require a mindful post-storm assessment. Check whether it is still balanced, whether the opener works typically, and whether seals or frameworks have actually moved. If the door took a hit, do not think the spring is the only part

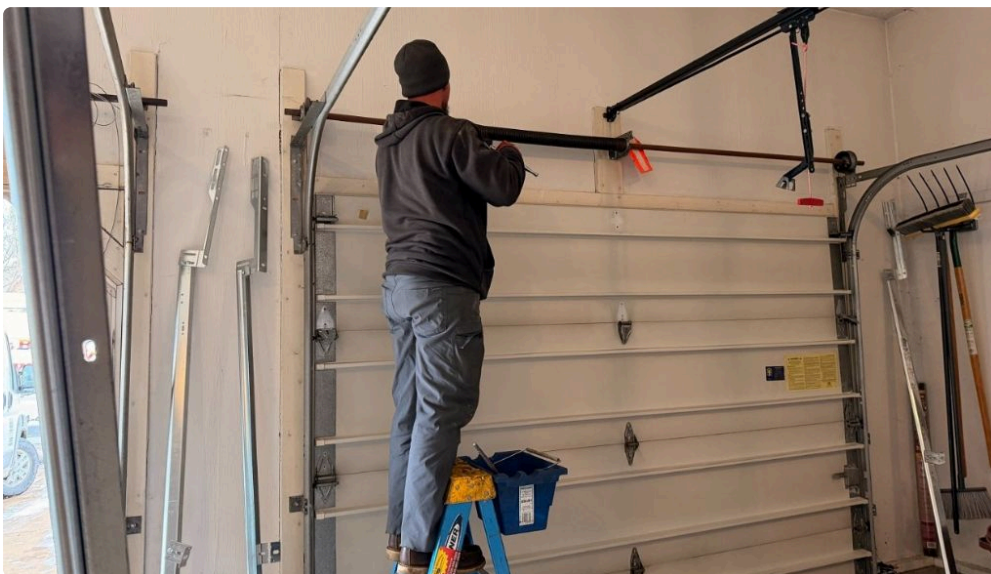
affected. An effect can interrupt greater than one part, and often the initial visible mistake is just the one most convenient to spot.

For commercial properties, the logic is comparable. Service tornado preparation includes making sure gain access to factors and emergency preparation remain in order. A garage or service door that relies upon [full garage services Gold Coast](#) a healthy and balanced springtime system needs the very same type of attention as any kind of other essential opening. If the door belongs to everyday procedures, downtime from an unsuccessful springtime can come to be a service disruption as high as an upkeep issue.

A practical way to consider repair service decisions

There are moments when an uncomplicated springtime substitute is the right solution, and there are moments when repair is only one part of a larger solution. If the door is structurally audio, effectively ranked, and or else healthy, recovering the springtime can return it to service effectively. If the door has repeated failings, tornado damages, bad sealing, or compliance worries, replacement preparation may be wiser.

That judgment generally boils down to three concerns: just how safe is the present configuration, how well does it fit the home's storm-risk profile, and just how much more wear is concealing in the rest of the system? Those concerns issue because a garage door need to not be dealt with like a collection of unrelated parts. Springs, opener, door panels, tracks, seals, and locking equipment all influence the same outcome.



If you desire the quickest straightforward variation of just how to fix a garage door spring securely and successfully, it is this: do not rush the tensioned components, do not ignore the door equilibrium, and do not separate spring repair work from the larger problem of tornado resilience. A springtime job took care of with treatment can bring back benefit. A spring work handled with judgment can additionally boost security and lower the opportunity that the garage comes to be the home's weak point when severe weather condition arrives.

A noise garage door is simple to consider given till it stops working. When the springtime falls short, the smarter feedback is calm, mindful, and informed. Shield the opener from strain, avoid unsafe equipment, and generate the best assistance prior to the issue expands. That method is more secure on a regular weekday, and far more essential when cyclone period, extreme tornados, or an unanticipated emergency fixing are part of the picture.